



Est. 1882

# *Starting School*

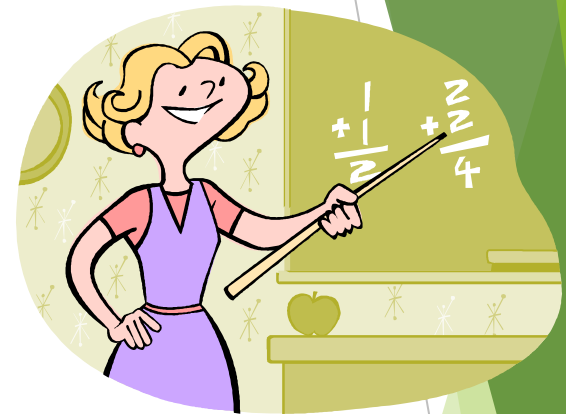


# Welcome!!

Welcome to a new and exciting stage in your child's life.

During this year, your child will make new friends and enjoy a variety of new experiences.

We understand that with Covid 19 the circumstances are a little strange but we will do our best to help you and your child settle in to our school.





# School Hours

School begins at 8.40am normally, but due to Covid 19 starting times need to be staggered to ensure everyone's safety.

**Group 1 - Surnames beginning A - D: 8.40**

**Group 2 – Surnames beginning E - K: 8:43**

**Group 3 – Surnames beginning L - P: 8:46**

**Group 4 - Surnames beginning Q - Z: 8:49**



A teacher is on duty each morning to open the gate.

Children come down the ramp and straight into their classroom.

# Collecting your child

- ▶ Home time for Junior/Seniors and First class is 1.20pm officially (5mins variation)
- ▶ Parents/Guardians/Child minders need to wait at the end of the ramp for pupils from Ms Wallace's class.
- ▶ To introduce each Junior Infant smoothly into their new school environment, Junior Infant pupils will go home at 11.50am for the first two weeks until - until Fri 10<sup>th</sup> September.
- ▶ Children to be collected at the pedestrian gate by a parent or designated person. \* **Acceptance Form/ Emergency Contacts on Aladdin Connect**

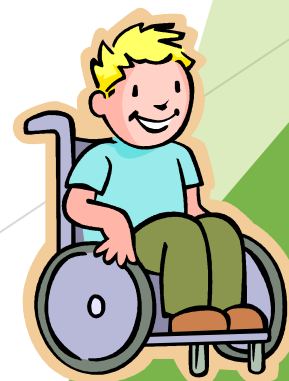
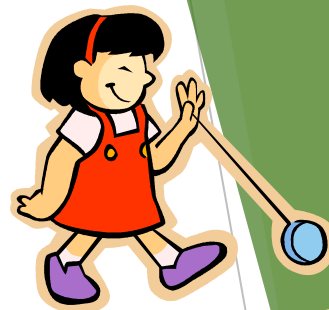
# Breaks

There are two breaks during the day.

The first is from 10.00 to 10.20am. After which the class will wash their hands and have our snack food time.

The second is from 12.00 to 12.20. After this the class will wash their hands and have lunch food time.

An area of the playground is reserved especially for Ms Wallace's class



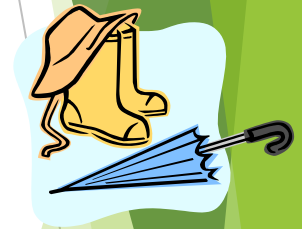


# Clothes



We do not have a uniform in Saint Michael's National School. However the children should wear comfortable clothing daily.

Runners are needed as the children play outdoors daily. VELCRO footwear is essential for all pupils who have not yet learned how to tie laces. This is especially important this school year with social distancing, so we ask all parents to choose correct footwear for their child.





# Home school communication

- ▶ Aladdin Connect App



- ▶ Email office

- ▶ [info@smnslimerick.ie](mailto:info@smnslimerick.ie)

- ▶ Seesaw Family



- ▶ Website

- ▶ [www.smnslimerick.ie](http://www.smnslimerick.ie)



# Aladdin Connect

## ► Important features

- Noticeboard
- Early collection
- Late Arrival
- Reason for absence (after 10am)
- Return to school declaration
- E payments

# First day - a happy one!



Please help prepare your child for their new school environment.

On Monday 31<sup>st</sup> August you and your child will meet the teacher and visit the classroom.

On this day we will encourage you to practice with your child how they will walk in alone from the main door. This is where you will drop them on day 1.

# First day - a happy one!

- ▶ On your child's first day parents cannot come into the building but if you are worried you can wait in the shelter shed in the yard. We will phone you if your child is upset.
- ▶ For the rest of the first week you can say goodbye from the pedestrian gate at the end of the ramp.



## Week 2

- ▶ On week two we ask that parents do not enter the school grounds at all. Encourage your child to walk down. Please prepare them for this in advance. If they are ready to walk down on their own earlier encourage them to do so.
- ▶ There are 3 staff on duty and once your child is on the grounds the only way out is via the gate they came in.

# Who will work with your child



**Ms. Wallace**

- Ms Wallace is your child's class teacher

# Junior Infant Classroom





# Junior Infant Classroom





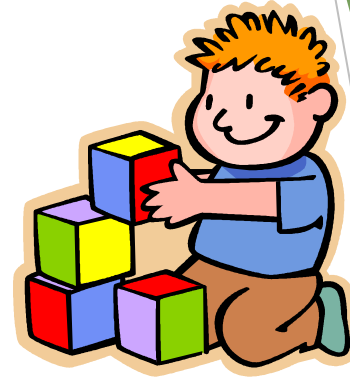
# Play

Play is a significant part of your child's development in school and is carried out on a daily basis. *Play helps your child to*

- ▶ Build relationships: learn to share, take turns, problem solve...
- ▶ Be creative
- ▶ Read, write and learn about numbers
- ▶ Think
- ▶ Use language
- ▶ Use fine and gross motor skills



# Toys



There is no need for children to bring toys into school and we do not encourage this practice because of breakages, competition and peer pressure.

We have plenty of toys in school.

# Beginning to read...



This is the scheme used for learning letters, their sounds and learning to read.

Emphasis is on letter "sounds"  
NOT the names of the letters.



# Reading



We use a combination of two approaches:

1. "Little Books" which the child takes home and reads with the help of an adult.

2. High Frequency sight words

Two types of words:

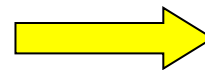
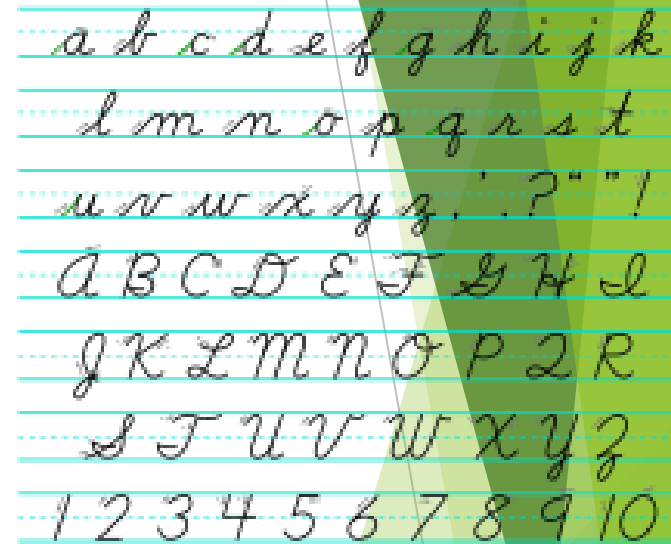
- Can sound them out (cat, big...)
- Tricky words (was, they...)



# Writing

Your child will be learning to do cursive writing. This will commence formally in January.

Pencil Grip



# Other Subjects

- ▶ Maths-very concrete and hands on.
- ▶ Irish-speaking and listening.
- ▶ History, Geography, Science
- ▶ Music, Drama, Art
- ▶ SPHE
- ▶ RE
- ▶ PE



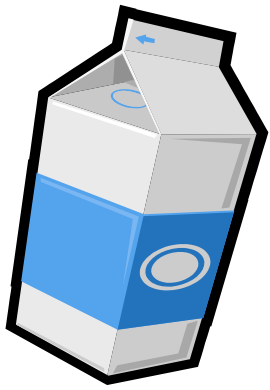
# Homework

- Starts after the Mid-Term break in October.

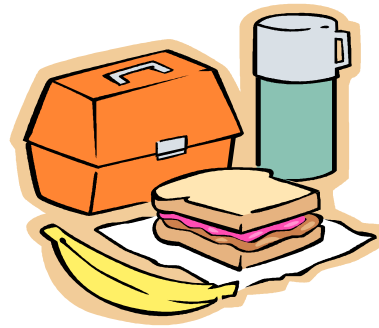
- They love it..so tap in to this short lived phenomena and make it an enjoyable activity !







# Food



Please choose a lunch box and a drink bottle that can be easily opened by your child.

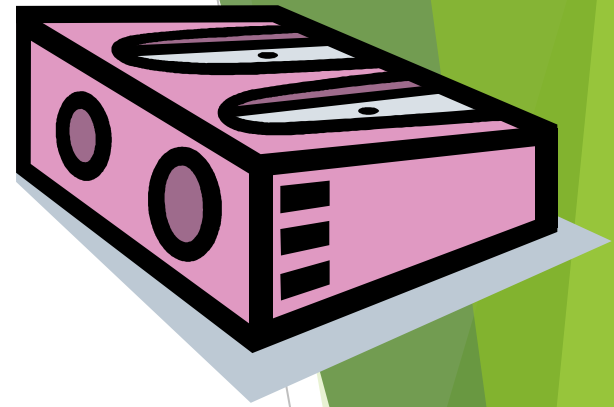
As part of our Social, Personal and Health Education Programme we have a Healthy Eating Policy. We encourage children to bring a healthy lunch to school. Nourishing foods are encouraged.

**We ask you not to include crisps, sweets, fizzy drinks or any junk food in your child's lunchbox.**

As we are a "Green School", we ask that all children have a reusable lunchbox and that they bring drinks in a reusable bottle.

We ask that little or no food is in plastic covering. Ideally, each piece of food should be edible straight from the lunch box.

# Stationery

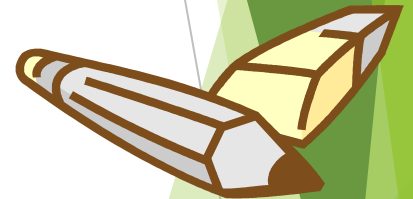


Pencils, crayons, rubbers etc. are provided for your child in school.

They will of course need writing and colouring materials for home use.

Your book bill contribution will cover the cost of all reading books used by your child.

Please cover and label all books with the name of your child clearly written on the outside front cover.



# School Bag



- ▶ Please ensure that the school bag is big enough to hold an A4 size folder and will also allow for your child's coat to be folded up and kept in the bag during class time.
- ▶ This year we are not using coat hooks like we usually do, so coats will need to be stored in schoolbags.

# Birthday Invitations

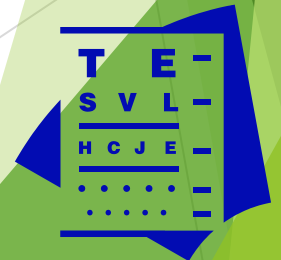
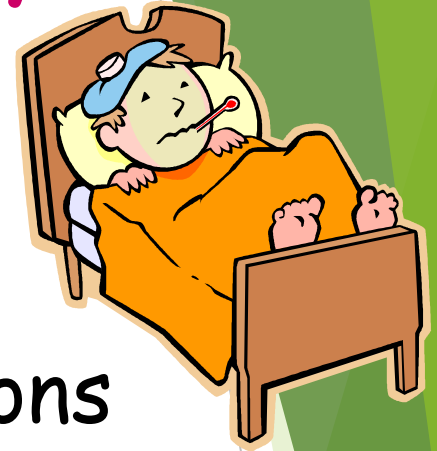


- ▶ Birthday invitations are strictly forbidden in our school
- ▶ Teachers cannot give out invitations and neither can children
- ▶ Parents should hand out invites OFF school grounds if they wish to have a party for their child.



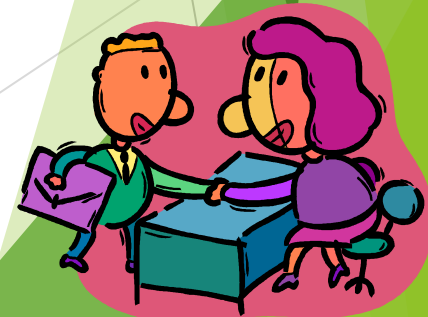
# Health and Safety

- ▶ Occasionally your permission will be required for vaccinations or health examinations.
- ▶ In primary school head lice may be an issue. When and if so, you will be informed about an incident of it and asked to check your child's hair carefully.



# Communication

- ▶ Seesaw Family App - this app allows you to message me directly if you have any messages you want to give me or small concerns.
- ▶ If I need to discuss something, I can call you by phone or arrange a Zoom call



# Office

- ▶ Annette is our school secretary.
- ▶ Also known as Ms O'Neill
- ▶ She works everyday except Wednesday.
- ▶ Office hours are 9am to 2pm
- ▶ Telephone 061 315927
- ▶ Email [info@smnslimerick.ie](mailto:info@smnslimerick.ie)





# School Website

- ▶ [www.smnslimerick.ie](http://www.smnslimerick.ie)
- ▶ If you are looking for something it is a great place to start!



See you in  
soon!!!

