

Saint Michael's N.S.

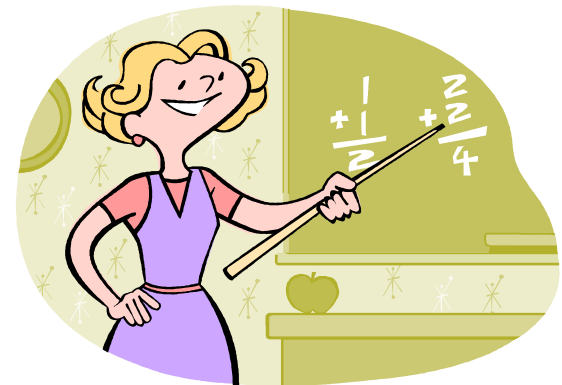
Starting School



Welcome!!

Welcome to a new and exciting stage in your child's life.

During this year, your child will make new friends and enjoy a variety of new experiences.





School Hours

School begins at 8.40am. A teacher is on duty each morning to open the gate. Children come straight into their classroom.

All infants go home at 1:20 pm.

In order to introduce each infant to the school, children will be going home at 12pm for the first two weeks. (Fri 14th September)

Children to be collected at the front door by parent or designated person. *



Breaks

There are two breaks during the day.

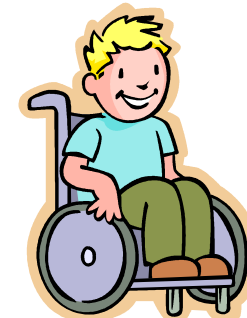
The first is a short one from 10.15 to 10.25am.

Additional time for eating is given before break begins.

The second is a longer break from 12 noon to 12.30.

Again, additional time for eating is given before this break begins.

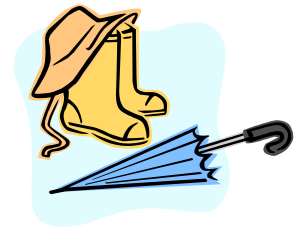
An area of the playground is reserved especially for junior infants up to first class .



Clothes



We do not have a uniform in Saint Michael's National School. However the children should wear comfortable clothing daily.



Runners are essential as the children play outdoors daily. VELCRO Please!

Please bear this in mind when dressing your child in the colder months.



First day - a happy one!



Please be positive with your child in preparing him/her for school and explain to them what will happen re. teacher, other children, breaks, sitting down, tidy-up time and home time.

A quick departure is usually the best policy. The child knows this is expected and while may initially display some signs of upset, in general children settle very quickly once the parent has left.

Remember you are only a quick phone call away !

Play

Play is a significant part of your child's development in school and is carried out on a daily basis. There are many types of play which attribute to holistic development during the early childhood years: language play, physical play, pretend play, creative play and games with rules.

Play helps your child to

- * Build relationships: learn to share, take turns, problem solve...
- * Be creative
- * Read, write and learn about numbers
- * Think
- * Use language
- * Use fine and gross motor skills



Toys



There is no need for children to bring toys into school and we do not encourage this practice because of breakages, competition and peer pressure.

We have plenty of toys in school.

Beginning to read...



Jolly Phonics



This is the scheme used for learning letters, their sounds and overall in beginning to read.

Emphasis is on letter sounds not the names of the letters.



Reading



We use a combination of two approaches:

1. "Little Books" which the child takes home and reads with help of an adult. Once homework begins they get a book each night.

2. High Frequency sight words

Two types of words:

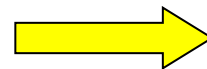
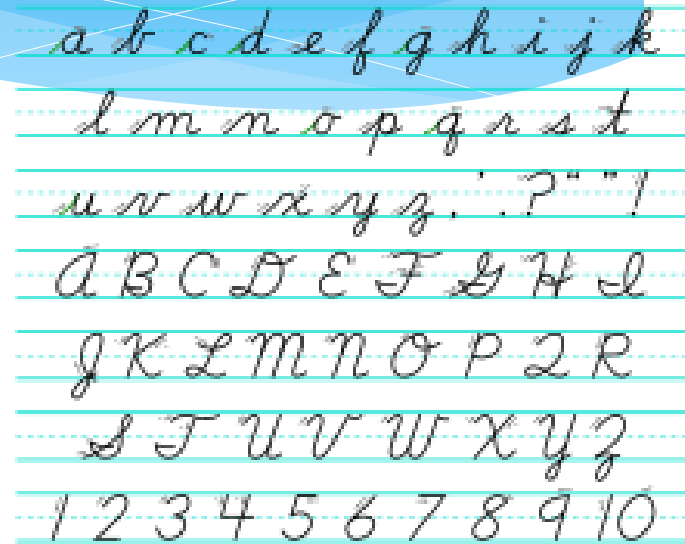
- Can sound them out (cat, big...)
- Tricky words (was, they...)



Writing

Your child will be learning to do cursive writing. This will commence formally in January.

Pencil Grip = Demo



Other Subjects

- * Maths-very concrete and hands on.
- * Irish-speaking and listening.
- * History, Geography, Science
- * Music, Drama, Art
- * SPHE
- * RE
- * PE

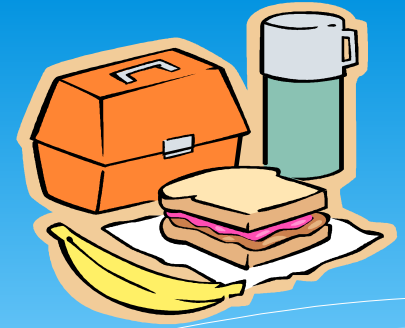


Homework

- Starts after the Mid-Term break in October.
- They love it..so tap in to this short lived phenomena and make it an enjoyable activity !



Food



Lunches

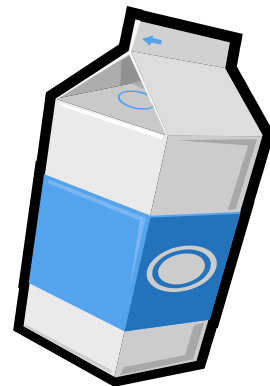
Choose a lunch box and a drink bottle that can be easily opened.

As part of our Social, Personal and Health Education Programme we have a Healthy Eating Policy. We encourage children to bring a healthy lunch to school. Nourishing foods are encouraged.

We ask you not to include crisps, sweets, fizzy drinks or any junk food in your child's lunchbox.

As we are a "Green School", we ask that all children have a reusable lunchbox and that they bring drinks in a reusable bottle.

All rubbish must be taken home.



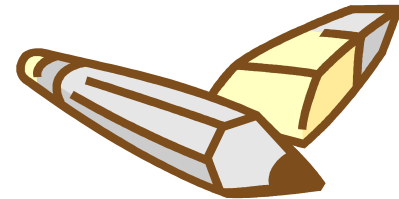
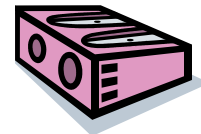
Stationery

Pencils, crayons ,rubbers etc. are provided for your child.

They will of course need writing and colouring materials for home use.

Your book contribution will cover the cost of all books , workbooks and copies.

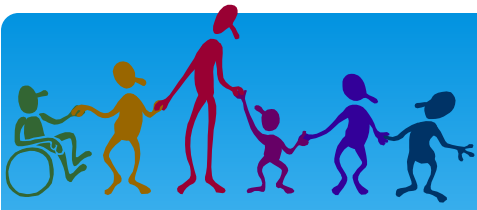
You will be asked to cover and label all books.



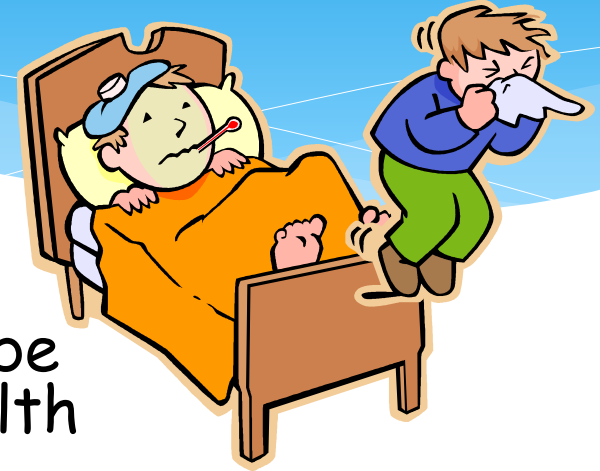
School Bag

- * Please ensure that the school bag is big enough to hold the homework folder.

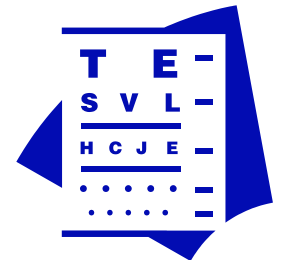




Health and Safety



- * Occasionally your permission will be required for vaccinations or health examinations.
- * In primary school head lice may be an issue.
- * If your child develops any health issues that you feel we should be made aware of, please inform the class teacher.



Assessment



- * Informal assessment will be continually made by your child's teacher.
- * Phonics/Reading & Maths assessments will be done at regular intervals.
- * In October and February we will have a parent teacher meeting to discuss your child's progress.
- * Formal written reports are sent out at the end of the Summer term.
- * In the middle of Senior Infants, the MIST standardised reading test and dyslexia screening test will be done.



Communication

- * Please do not hesitate to approach me at any time if there is anything you feel anxious about and we can arrange a convenient time to meet and discuss the issue
- * Post box – Inside the main door



Office

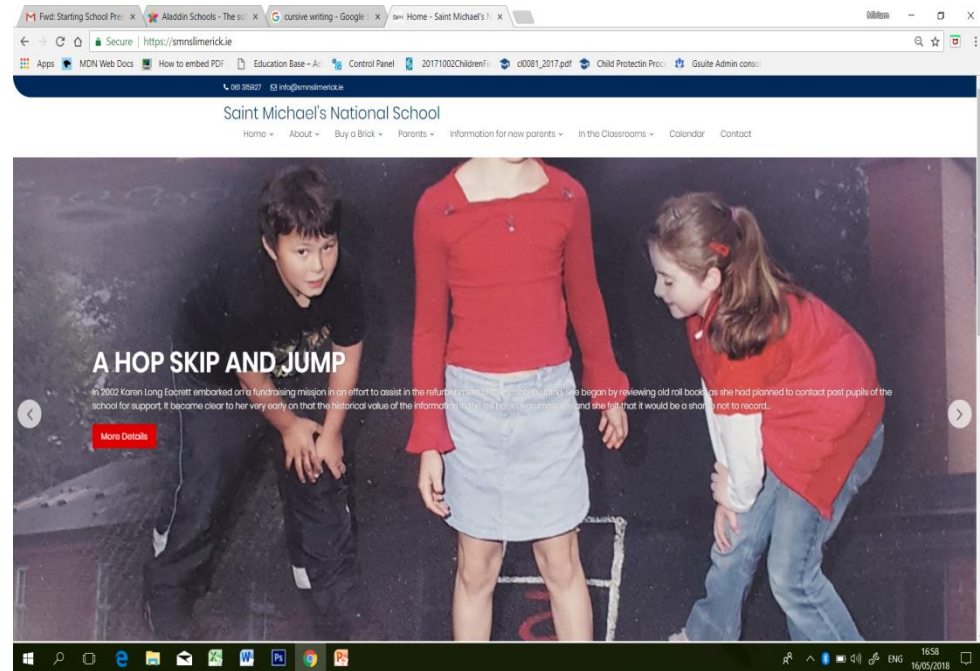
- * Annette is our school secretary.
- * She works everyday except Wednesday.
- * Office hours are 9.30am to 2pm.
- * Telephone 061 315927
- * Email info@smnslimerick.ie

- * Gate Locked - For the safety of the children, the gate is locked during playtime and PE lessons.



School Website

- * This year our school launched their first school website.
- * www.smnslimerick.ie
- * If you are looking for something it is a great place to start!
- * E.g Absence form



Building Work

- * A new classroom and entrance area have been sanctioned by the Department of Education.
- * Due to commence during the summer

Buy a Brick

Saint Michael's N.S.
Parents, Past Pupils & Friends

We need your support to develop our school!

Help build our future...

Buy a brick inscribed with your name/family name/company name to appear on our virtual brick wall and on a commemorative plaque on school grounds.

Buy a brick for €50.00 before the 31st May 2018

Buy online - www.smnslimerick.ie or call 061 315927

Cheques should be made payable to St. Michael's PTA & posted to Saint Michael's N.S. ,11 Barrington Street,Limerick marked 'Buy a Brick Campaign'

See you in
September!!!

